

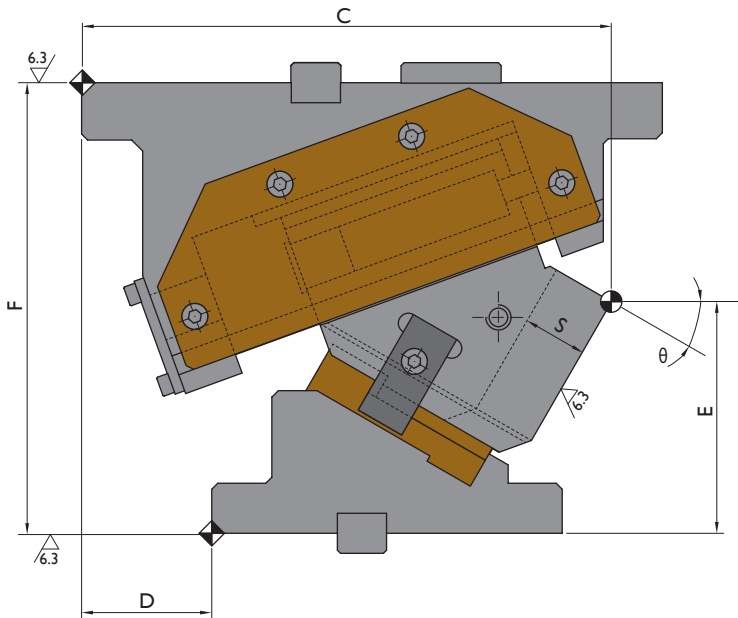
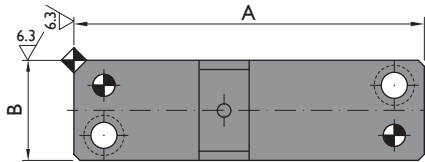
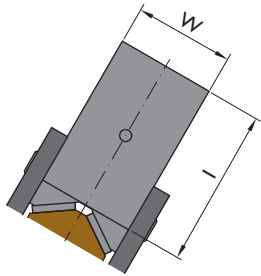
WEB



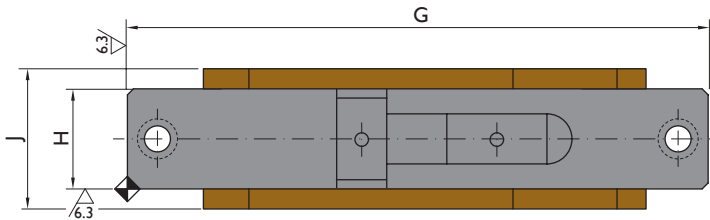
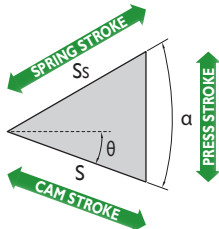
CAD

GLOBAL STANDARD COMPONENTS
NAAMS

Structure for cams width 50 - 75 mm



CAM DIAGRAM



Ordering example: CACN-F-W-θ
CACN-F-75-25

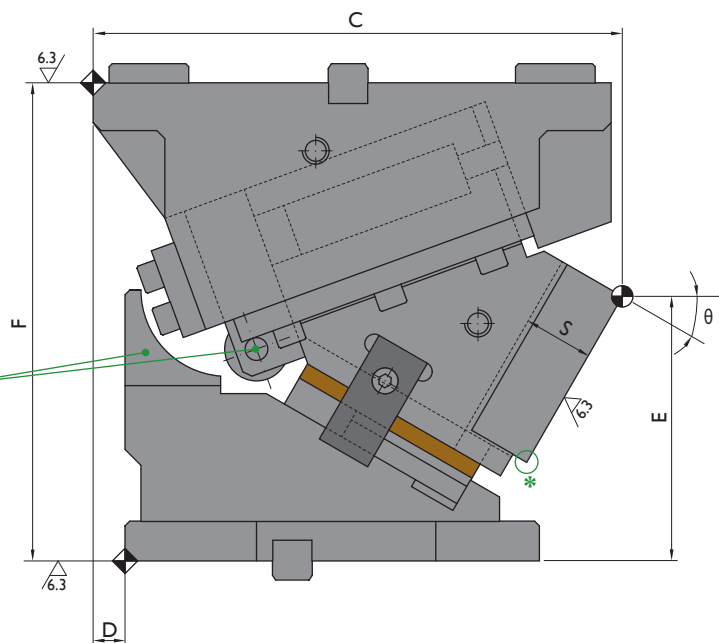
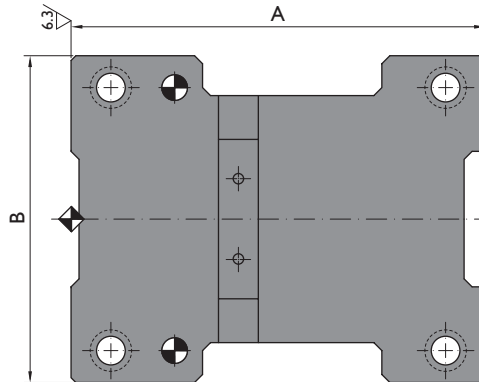
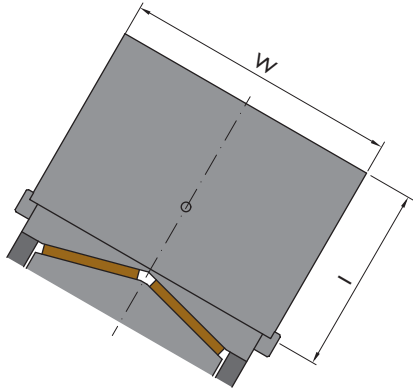
WEB



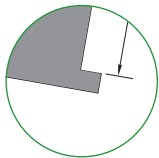
CAD

GLOBAL STANDARD COMPONENTS
NAAMS

Structure for cams width 150 - 300 mm

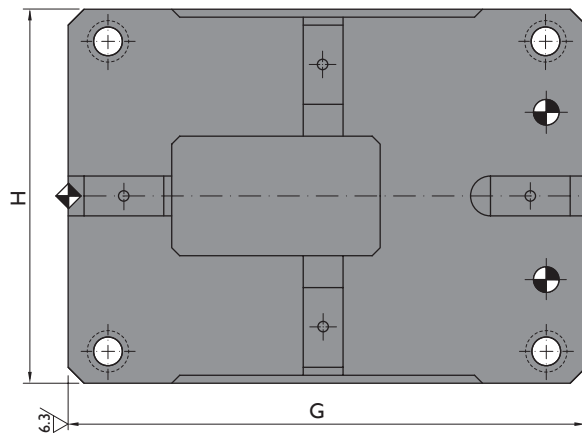
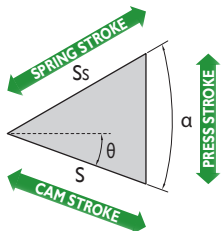


Roller and Roller Driver
available from 0° to 45° working angle



* CACN-F-300

CAM DIAGRAM



Ordering example: CACN-F-W-θ
CACN-F-150-60

Order No.			Main Features				General Dimensions												
Model	W mm	θ °	S mm	Working Force tnf 300.000 strokes	Weight kg	Spring Force kgf	A mm	B mm	C mm	D mm	E mm	F mm	G mm	H mm	I mm	J mm	Ss mm	α °	
CACN-F	50	00	26	9	19	280	175	50	252	110	155	225	290	50	80	70	40	50	
CACN-F	50	05	28	9	19	280	175	50	256.4	105	150.86	225	290	50	80	70	40	50	
CACN-F	50	10	31	9	18.5	280	175	50	261	95	141.4	225	290	50	80	70	40	50	
CACN-F	50	15	34	9	18.5	280	175	50	268.06	89	136.57	225	290	50	80	70	40	50	
CACN-F	50	20	37	9	18	280	175	50	267.11	80	131.39	225	290	50	80	70	40	50	
CACN-F	50	25	40	9	17.5	280	175	50	266.03	70	121.32	225	290	50	80	70	40	50	
CACN-F	50	30	43	9	17.5	280	175	50	264.61	65	115.64	225	290	50	80	70	40	50	
CACN-F	50	35	47	9	17	280	175	50	260.11	52	109.65	225	290	50	80	70	40	50	
CACN-F	50	40	51	9	17	280	175	50	256.52	45	103.36	225	290	50	80	70	40	50	
CACN-F	50	45	56	9	17.5	280	175	50	254.8	40	96.77	225	290	50	80	70	40	50	
CACN-F	50	50	62	9	17.5	280	175	50	247.93	20	89.9	225	290	50	80	70	40	50	
CACN-F	50	55	70	9	18	280	175	50	245.07	5	88.51	225	290	50	80	70	40	55	
CACN-F	50	60	60	9	18	280	175	50	237.97	-5	77.89	225	290	50	80	70	30	60	
CACN-F	75	00	32	15	37.5	560	200	75	314	156	185	275	320	75	100	97	50	50	
CACN-F	75	05	35	15	37	560	200	75	314.28	141	175.82	275	320	75	100	97	50	50	
CACN-F	75	10	39	15	36	560	200	75	314.6	131	171.17	275	320	75	100	97	50	50	
CACN-F	75	15	42	15	35.8	560	200	75	305.94	109	166.06	275	320	75	100	97	50	50	
CACN-F	75	20	46	15	35.3	560	200	75	309.24	100	160.49	275	320	75	100	97	50	50	
CACN-F	75	25	50	15	34.5	560	200	75	304.48	85	154.45	275	320	75	100	97	50	50	
CACN-F	75	30	54	15	34	560	200	75	304.61	80	147.96	275	320	75	100	97	50	50	
CACN-F	75	35	59	15	34	560	200	75	301.58	67	141.03	275	320	75	100	97	50	50	
CACN-F	75	40	64	15	34.5	560	200	75	299.37	55	133.68	275	320	75	100	97	50	50	
CACN-F	75	45	70	15	34.5	560	200	75	293.94	40	125.91	275	320	75	100	97	50	50	
CACN-F	75	50	78	15	35	560	200	75	286.25	23	117.76	275	320	75	100	97	50	50	
CACN-F	75	55	70	15	35	560	200	75	275.27	0	109.24	275	320	75	100	97	40	55	
CACN-F	75	60	80	15	35	560	200	75	267.97	-14	92.89	275	320	75	100	97	40	60	
CACN-F	150	00	32	18	78	560	260	165	341	95	205	300	325	165	120	-	50	50	
CACN-F	150	05	35	18	77.5	560	260	165	330.08	60.5	200.76	300	325	165	120	-	50	50	
CACN-F	150	10	39	18	76	560	260	165	329.2	45.5	195.94	300	325	165	120	-	50	50	
CACN-F	150	15	42	18	74.5	560	260	165	334.82	37	190.55	300	325	165	120	-	50	50	
CACN-F	150	20	46	18	73.5	560	260	165	333.88	27	184.58	300	325	165	120	-	50	50	
CACN-F	150	25	50	18	71.7	560	260	165	331.32	17	178.04	300	325	165	120	-	50	50	
CACN-F	150	30	54	18	72.3	560	260	165	332.11	20	165.95	300	325	165	120	-	50	50	
CACN-F	150	35	59	18	72	560	260	165	330.69	10	153.32	300	325	165	120	-	50	50	
CACN-F	150	40	64	18	72	560	260	165	329.02	0	140.17	300	325	165	120	-	50	50	
CACN-F	150	45	70	18	71.5	560	260	165	328.55	-31	126.52	300	325	165	120	-	50	50	
CACN-F	150	50	78	18	71	560	210	165	327.74	8	112.4	300	325	165	120	-	50	50	
CACN-F	150	55	87	18	70	560	210	165	327.05	-2	97.85	300	325	165	120	-	50	55	
CACN-F	150	60	100	18	70	560	210	165	319.45	-17	82.89	300	325	165	120	-	50	60	

Order No.			Main Features				General Dimensions													
Model	W mm	θ °	S mm	Working Force tnf 300.000 strokes	Weight kg	Spring Force kgf	A mm	B mm	C mm	D mm	E mm	F mm	G mm	H mm	I mm	J mm	Ss mm	α °		
CACN-F 200 00	200	00	32	27	105.5	1120	260	205	341	95	205	300	325	235	120	-	50	50		
CACN-F 200 05	200	05	35	27	104.8	1120	260	205	330.08	60.5	200.76	300	325	235	120	-	50	50		
CACN-F 200 10	200	10	39	27	108.8	1120	260	205	329.2	45.5	195.94	300	325	235	120	-	50	50		
CACN-F 200 15	200	15	42	27	101	1120	260	205	334.82	37	190.55	300	325	235	120	-	50	50		
CACN-F 200 20	200	20	46	27	99.5	1120	260	205	333.88	27	184.58	300	325	235	120	-	50	50		
CACN-F 200 25	200	25	50	27	97	1120	260	205	331.32	17	178.04	300	325	235	120	-	50	50		
CACN-F 200 30	200	30	54	27	97.8	1120	260	205	332.11	20	165.95	300	325	235	120	-	50	50		
CACN-F 200 35	200	35	59	27	97.5	1120	260	205	330.69	10	153.32	300	325	235	120	-	50	50		
CACN-F 200 40	200	40	64	27	97.5	1120	260	205	329.02	0	140.17	300	325	235	120	-	50	50		
CACN-F 200 45	200	45	70	27	97	1120	260	205	328.55	-31	126.52	300	325	235	120	-	50	50		
CACN-F 200 50	200	50	78	27	96.8	1120	210	205	327.74	8	112.4	300	325	235	120	-	50	50		
CACN-F 200 55	200	55	87	27	95	1120	210	205	327.05	-2	97.85	300	325	235	120	-	50	55		
CACN-F 200 60	200	60	100	27	94.8	1120	210	205	319.45	-17	82.89	300	325	235	120	-	50	60		
CACN-F 300 00	300	00	38	40	195	1680	280	270	396	133	285	375	360	330	155	-	60	50		
CACN-F 300 05	300	05	42	40	195.6	1680	280	270	393.39	112.5	280.7	375	360	330	155	-	60	50		
CACN-F 300 10	300	10	46	40	193	1680	280	270	390.81	92	275.72	375	360	330	155	-	60	50		
CACN-F 300 15	300	15	51	40	191.5	1680	280	270	388.2	71.5	270.04	375	360	330	155	-	60	50		
CACN-F 300 20	300	20	55	40	183.7	1680	280	270	385.51	51	263.68	375	360	330	155	-	60	50		
CACN-F 300 25	300	25	50	40	176	1680	280	270	372.66	30.5	256.64	375	360	330	155	-	50	50		
CACN-F 300 30	300	30	54	40	173	1680	280	270	369.61	30	243.94	375	360	330	155	-	50	50		
CACN-F 300 35	300	35	59	40	173	1680	280	270	367.79	16	230.61	375	360	330	155	-	50	50		
CACN-F 300 40	300	40	64	40	172	1680	280	270	365.66	12	216.66	375	360	330	155	-	50	50		
CACN-F 300 45	300	45	70	40	172	1680	280	270	363.15	3	202.12	375	360	330	155	-	50	50		
CACN-F 300 50	300	50	78	40	170	1680	230	270	355.23	-26	177.04	375	360	330	155	-	50	50		
CACN-F 300 55	300	55	87	40	169	1680	230	270	353.34	-53.5	151.45	375	360	330	155	-	50	55		
CACN-F 300 60	300	60	100	40	168	1680	230	270	350.94	-61	130.39	375	360	330	155	-	50	60		